

PC: Greg Ross Croucher

# Municipality of Tweed Community Investment Profile



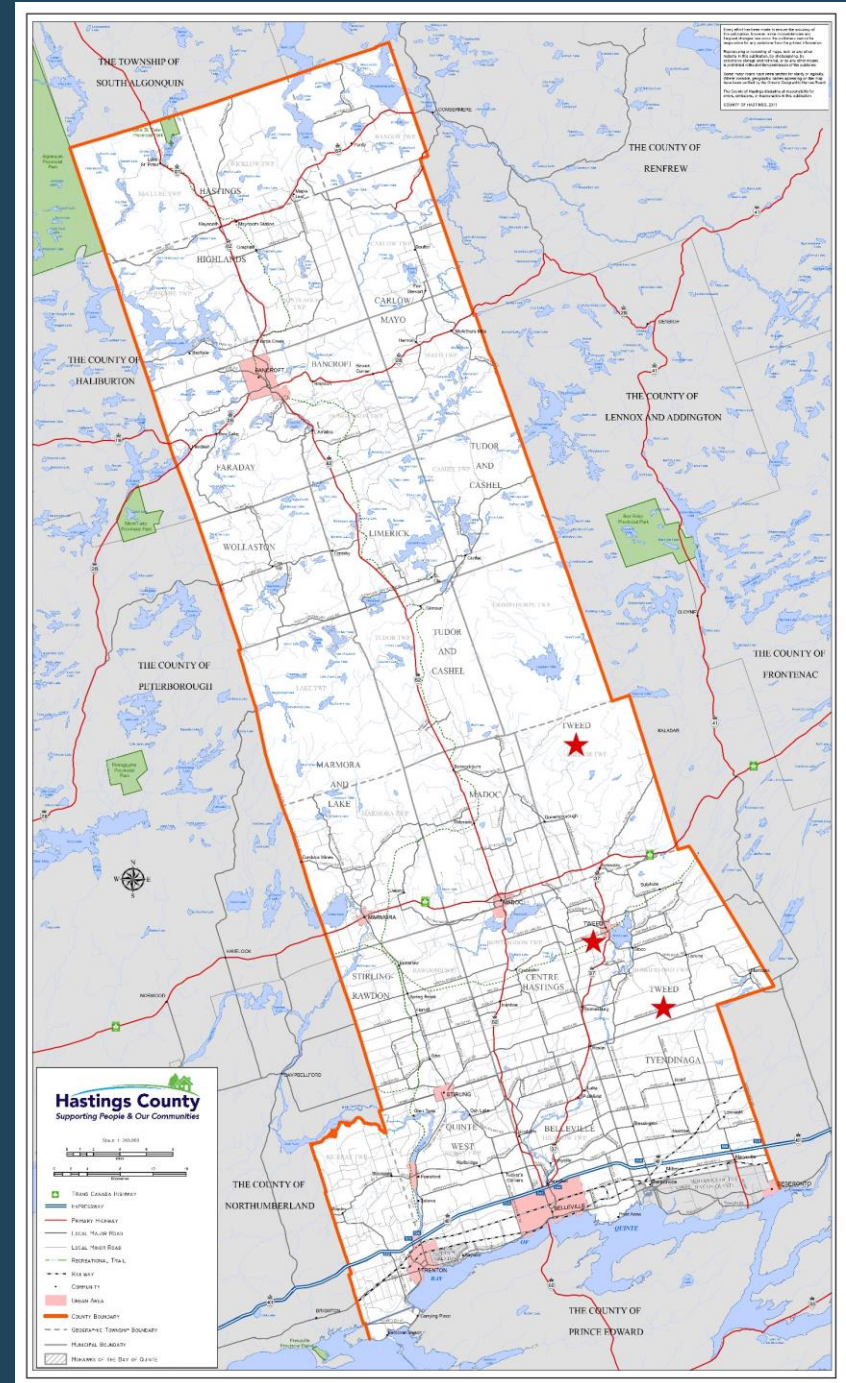


## OUR VISION

The Municipality of Tweed is a vibrant, prosperous place to live, work and play. The Municipality strives to respond to the needs of our citizens; cherish and celebrate our culture and heritage; support the local economy; and protect the environment that sustains us.

The Municipality of Tweed is located halfway between Toronto and Ottawa, within the County of Hastings. The Village of Tweed is the Urban Centre surrounded by 6 Hamlets – Queensborough, Actinolite, Sulphide, Stoco, Marlbank, and Thomasburg.

Destination	Approximate Distance
Toronto Pearson Airport	205 km
Ottawa International Airport	160 km
Belleville Train Station	33 km
Highway 401	30 km
Highway 7	7 km





# Population & Demographics

## 2021 Census

Population & Demographics (2021 Census)	
Municipality of Tweed Population	6,067
Hastings County Population	145,746
Median Age of Population	53.6
% of Population Aged 15 & Over	87.3
Population Density	6.6 km <sup>2</sup>
Median Total Income of Households	\$69,000

Quick Facts	
Location	Municipality of Tweed, Ontario, Canada
Total Private Dwellings	3042
Land Area	918.61 km <sup>2</sup>
Lakes, Rivers & Stream Area	18 m <sup>2</sup>
Geographic Coordinates	44° 36'N 77°20'W
Elevation	145m
Time Zone	Eastern



# Tourism

The Municipality of Tweed is the perfect venue for outdoor enthusiasts. Whether you enjoy hiking, paddling, fishing, local events ... you will find the perfect adventure here in Our Backyard. Located halfway between Toronto and Ottawa, the Municipality of Tweed is your backyard playground.

The Eastern Ontario Trails network and other trails that run along the beautiful forest and pristine waters will make you forget about that busy city living. It's time to breathe in the fresh clean air and embark on a signature Ontario experience. Enjoy a day trip or multi-day trip canoeing our rivers and lakes. Grab your paddle, a canoe or kayak, or a partner and enjoy the rivers and lakes throughout Our Backyard. Lace up those hiking boots and hit the trail. With two conservation areas, Vanderwater Park and Price Conservation, our region has hikes for families of all ages. Angling for an adventure? The numerous lakes, rivers and streams in and around the area makes the Municipality of Tweed a very popular sport-fishing destination. As many anglers will tell you our number one attraction, Stoco Lake, is known for world-class muskie, gar-pike, and black crappie fishing.

Whether you want to cheer on the last true cowboy (Tweed Stampede & Jamboree) or enjoy original Canadian theatre (Tweed & Company Theatre), the Municipality of Tweed has something for you. Our four-season destination is packed with festivals and events year-round. If you are a foodie you're not going to want to miss our award-winning Farm To Table Community Dinner.

Our four-season destination has everything you need to make your next outdoor adventure one to remember.





# Recreation & Services

The Municipality of Tweed has an abundance of recreation opportunities.

## Highlights Include:

- Arena
- Pool
- Splashpad
- Outdoor Fitness Equipment
- 4 baseball diamonds
- 2 soccer fields
- Beach volleyball court
- Basketball court
- Kiwanis Accessible Playground
- Kiwanis Disc Golf
- Marlbank Recreation Dome
- Walking Track
- Trails
- Curling Club

The Municipality of Tweed offers many services. Highlights Include:

- Tweed Public Library
- Tweed & Area Heritage Centre
- Gateway Community Health Centre
- Moira Place Long Term Care

Visit our website [www.tweed.ca](http://www.tweed.ca) for a complete list of our businesses and services offered.







# Emergency Services

## Tweed Fire Department

The Tweed Volunteer Fire Department provides emergency services to the Municipality of Tweed.

### **Emergencies: DIAL 911**

Fire Chief: Derrick Little

Fire Hall: 127 River St. W. 613-478-3083 (messages only)

## Police

The Municipality of Tweed police patrol and emergency services are provided by the Ontario Provincial Police (OPP).

### **Emergencies: DIAL 911**

Non-Emergencies: 888-310-1122

Central Hastings Dispatchment: 105953 Trans-Canada Hwy7, Madoc, ON

Contact: 613-473-4234 – [www.opp.ca](http://www.opp.ca)

## Ambulance

The Municipality of Tweed's emergency medical land ambulance services are provided by Hastings Quinte Paramedic Service. There is a satellite base, which operates during daytime hours, at the Tweed Fire Hall.

### **Emergencies: DIAL 911**

Hastings-Quinte EMS: 111 Millennium Parkway, Belleville, ON

Contact: 613-771-9366 – [www.hastingscounty.com](http://www.hastingscounty.com)



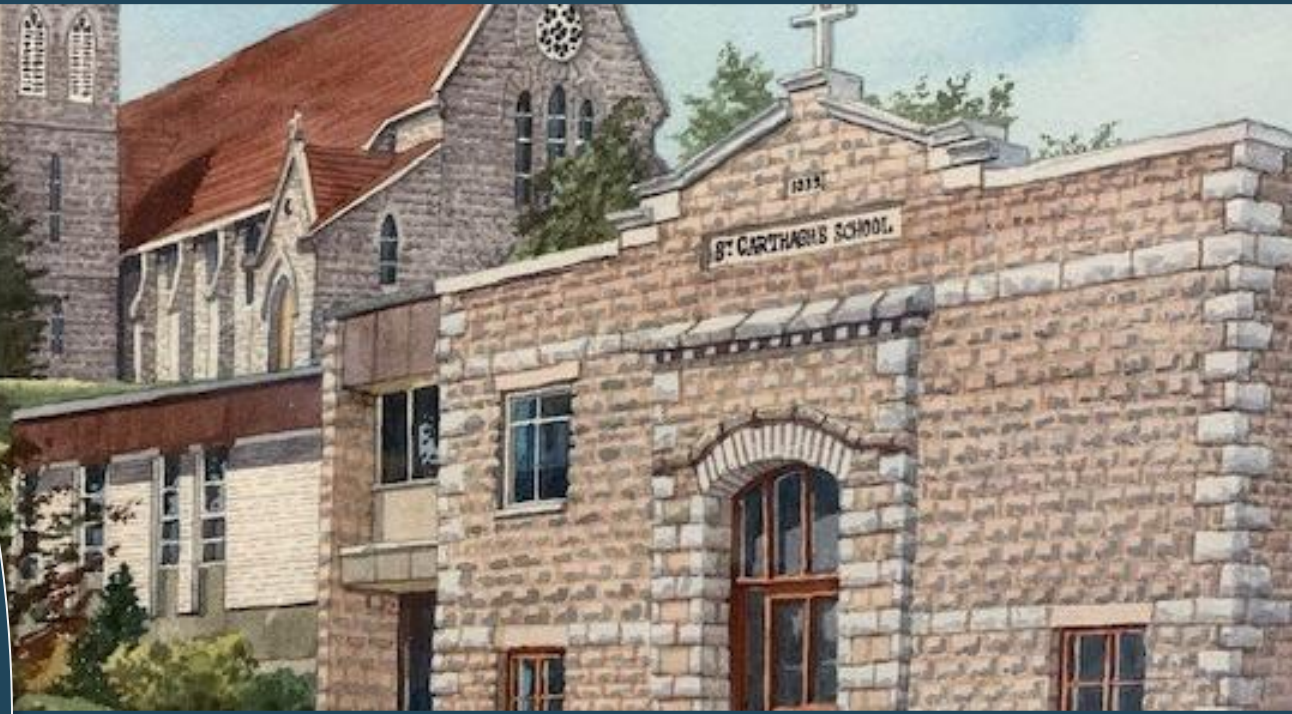
# Education

The Municipality of Tweed and the surrounding region offers several excellent education options from JK-12.

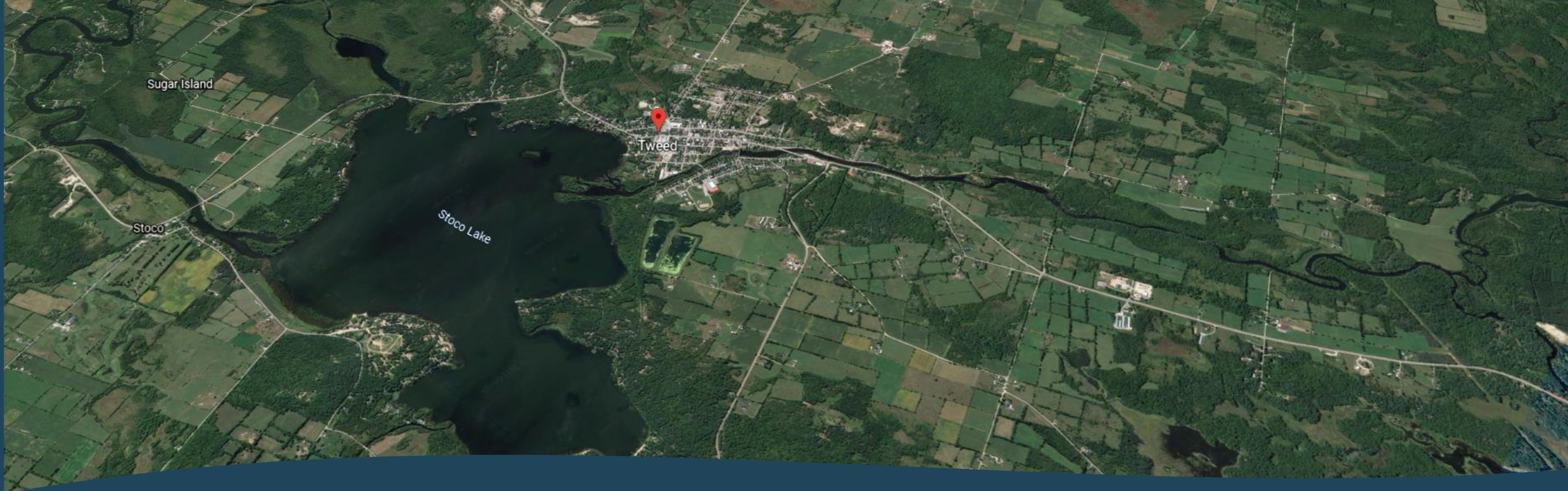
Location	School
Tweed	Tweed Elementary School
Tweed	St. Carthagh Catholic School
Madoc 21 km	Centre Hastings Secondary School
Belleville 36 km	St. Theresa Catholic Secondary School

## Post Secondary Education

Location	College/University
Belleville	Loyalist College
Kingston	St. Lawrence College Queen's University Royal Military College
Peterborough	Fleming College Trent University







# Investment – Business & Housing

There are many advantages investing in the Municipality of Tweed including zero development charges, low labour costs, affordable property, lower taxes, and close proximity to Urban Centres. The Municipality is situated on Stoco Lake and surrounded by beautiful farmland, waterways, and wilderness.

The Municipality of Tweed received funding for expansion of their wastewater system which will result in approximately 425 new connections to the water and sewer system within the Village of Tweed boundaries. There are numerous residential development opportunities on private land outside of the village . Of these, several properties are on serviced municipal road frontage while others require servicing provisions.

As the Municipality of Tweed continues to grow there is an opportunity for new business growth in our area. Our region is home to many agencies that provide business development services including access to financing and grants, marketing, labour/training, development and advisory services. Hastings County offers free confidential business coaching, please contact Christine McLean, Small Business Coordinator, [mcleanc@hastingscounty.com](mailto:mcleanc@hastingscounty.com)/613-391-0350. For additional information please contact the Community Development Department: Rachele Hardesty, Manager of Community Development, [rhardesty@tweed.ca](mailto:rhardesty@tweed.ca)/613-478-2535.



# Taxes and Assessments

## 2023 Tax Rates

Category	Rate (%)
Residential	1.195944
Multi-Residential	1.195944
Farm	.298986
Managed Forest	.298986
Commercial	2.027239
Industrial	2.027239
Pipeline	1.737196

The Municipality of Tweed sets property tax rates based on the following factors:

- The Municipal tax rate, which is set on an annual basis by the Municipality of Tweed Council.
- The County tax rate, which is set on an annual basis by Hastings County Council.
- The Education tax rate, which is established by the Province of Ontario.
- The assessment value of properties, which is determined by the Municipal Property Assessment Corporation (MPAC).

The Municipality of Tweed provides the following services to residents and businesses through the collection of the municipal portion of these taxes:

- Emergency & Protective Services (fire protection, police, by-law enforcement, animal control)
- Public Works (roads, water/sewer services)
- Development Services (planning and economic development)
- Recreation & Culture Services (parks, arena, community centres, library, pool, splashpad, and more)
- Municipal Government Administration

User Pay System

- Water/Wastewater Treatment (Village of Tweed)
- Building Services (Permits)





# Building & Planning



Building Inspection for the Municipality of Tweed, Township of Stirling-Rawdon, Township of Tyendinaga, Town of Deseronto and Madoc Township is administered by the Building Inspection Services Board.

## Building & Planning Fees

### Building Permit Fees

New Residential Housing and Additions  
\$155 plus \$10.50 per \$1,000 of construction value

### Commercial and Industrial

\$185 plus \$10.50 per \$1,000 of construction value

### Entrance Permits

Administration Fee: \$100 plus applicable deposit

Residential Deposit: \$500

Commercial Deposit: \$1,000

### Plumbing

Residential Plumbing Permit: \$150 plus \$10.50 per new fixture/trap

Other Plumbing Permit: \$150 plus \$10.50 per new fixture/trap

### Sewage

New Sewage System: \$750

Sewage System Renovation: \$300

### Planning Fees

Zoning Amendment: \$1,200

Minor Variance: \$948

**The Municipality of Tweed does not have a Development Fee.**



# Community Improvement Plan (CIP)

The Municipality of Tweed has a CIP that proposes several Municipal project areas from the Village to the Hamlets. Various financial incentives have been developed to encourage redevelopment. These incentives include grants/loans for improving accessibility, planning and building permit fees, and façade improvement.

	Grant	Loan
Façade Improvement	50% up to \$5,000	50% up to \$5,000
Accessibility	50% up to \$5,000	50% up to \$5,000
Brownfield Property Tax & Remediation	50% up to \$2,500	50% up to \$2,500
Planning & Building Permit Fee	\$2,500	





# Municipality of Tweed Contacts

Mayor Don DeGenova - [mayor@tweed.ca](mailto:mayor@tweed.ca)

CAO/Treasurer – Gloria Raybone - [cao-treasurer@tweed.ca](mailto:cao-treasurer@tweed.ca)

Clerk – Karen LaVallee – [clerk@tweed.ca](mailto:clerk@tweed.ca)

Deputy Clerk – Lucas Wales – [lucasw@tweed.ca](mailto:lucasw@tweed.ca)

Manager of Community Development – Rachelle Hardesty – [rhardesty@tweed.ca](mailto:rhardesty@tweed.ca)

Manager of Public Works – Allan Broek - [pubwks@twp.tweed.on.ca](mailto:pubwks@twp.tweed.on.ca)

Chief Building Inspector – Richard Cook – [cbo@stirling-rawdon.com](mailto:cbo@stirling-rawdon.com)

Fire Chief – Derrick Little - [firechief@stirling-rawdon.com](mailto:firechief@stirling-rawdon.com)

[www.tweed.ca](http://www.tweed.ca) – 613-478-2535